



Defender™ 3000 Series

Low Profile Floor Scales

EasyConnect™



Low Profile Floor Platform for Drive-thru Applications

Defender 5000 Series low profile platform combines durable construction and an ultra-low height. Featuring a painted steel or stainless steel platform, built-in ramp, four alloy steel or IP68 stainless steel load cells (with adjustable feet), the ultra-low design simplifies the job of moving goods on and off the platform.

Unique Features:

- **Defender Series Low Profile Platforms** – Ultra-low profile painted steel or stainless steel solution for weighing drums and carts by loading and driving over the platform. 35 mm height for the 600 kg models and 45 mm for the 1500 kg models.
- **Install Easily with EasyConnect™** – Platforms are equipped with a 5 m double-shielded EasyConnect™ cable, which allows instant configuration with Defender 5000 (TD52) indicators for quick installation.
- **4 Models and 2 Different Sizes and Capacities for Industrial Applications** – Platform is available in 4 different models with 1000 x 1000 mm and 1250 x 1250 mm sizes and capacities of 600 to 1500 kg, allowing greater flexibility to best suit your weighing needs.

Defender™ 3000 Series

Low Profile Floor Scales

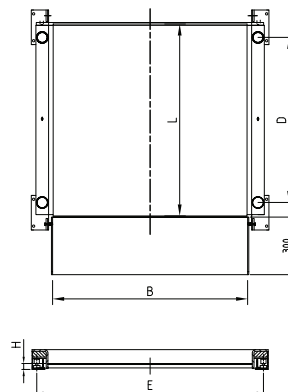
| Platform Models | DFD600HR | DFD1500HL | DFD600WR | DFD1500WL |
|---|--|-------------------|--|-------------------|
| Platform Dimensions (mm) | 1000 x 1000 | 1250 x 1250 | 1000 x 1000 | 1250 x 1250 |
| Platform Height (mm) | 35 | 45 | 35 | 45 |
| Material | Mild steel, black painted, non-treaded surface | | 304 Stainless steel, bead blasted, non-treaded surface | |
| Top plate thickness (mm) | 5 | 6 | 5 | 6 |
| Platform Capacity (kg) | 600 | 1500 | 600 | 1500 |
| Maximum Central Load | 150% of rated capacity | | | |
| Feet | 4 x swivel design, alloy steel with rubber caps, adjustable height | | 4 x swivel design, stainless steel with rubber caps, adjustable height | |
| Load Cell Model | Zemic H8C, alloy steel, OIML approved | | OHAUS SBH, stainless steel, OIML approved | |
| Load Cell Capacity Emax (kg) | 500 | 1000 | 500 | 1000 |
| Load Cell Safe Overload Limit | 150% of Emax | | | |
| Load Cell Protection | IP65, silicon sealed | | IP68, laser-weld hermetically sealed | |
| Load Cell Output Impedance | 350 Ω ± 3 Ω | | 350 Ω ± 1 Ω | |
| Load Cell Cable Length | 2 m | | 3 m | |
| Junction Box | IP54, 304 stainless steel, with double-shielded 5m long cable | | IP67, 304 stainless steel, with double-shielded 5m long cable | |
| Operating Temperature | -10 °C to 40 °C | | | |
| Platform Net Weight (kg) | 136 | 195 | 136 | 195 |
| Platform Shipping Weight (kg) | 166 | 235 | 166 | 235 |
| Platform Shipping Dimensions(W x D x H) | 1320 x 1120 x 250 | 1520 x 1320 x 255 | 1320 x 1120 x 250 | 1520 x 1320 x 255 |
| Ramp | One ramp standard, the other ramp available as accessory | | | |
| Compatible OHAUS Indicator | TD52P/TD52XW (with EasyConnect™ feature) sold seperately | | | |

DFD33P600HR DFD33P1500HL DFD33XW600WR DFD33XW1500WL

| | | | | |
|-----------------------------|---|------------|-----------|------------|
| Indicators | i-DT33P, ABS plastic / i-DT33XW, 304 stainless steel IP66 PCB housing | | | |
| Capacity × Readability (kg) | 600 × 0.2 | 1500 × 0.5 | 600 × 0.2 | 1500 × 0.5 |
| Display | 45 mm digit height LCD display with 3-color backlight | | | |
| Interface | RS232 included, Optional USB, Ethernet | | | |
| Power | i-DT33P, 240VAC or C batteries / i-DT33XW, 240VAC or rechargeable batteries | | | |
| Battery life | i-DT33P, 360 hours (backlight off) / i-DT33XW, 100 hours (backlight off) | | | |
| Features | Weighing, Counting, Checkweighing, Totalization | | | |

Outline Dimensions

| Low Profile | | | | | |
|-----------------------|--------|--------|--------|--------|--------|
| Model | L (mm) | B (mm) | D (mm) | E (mm) | H (mm) |
| DFD600HR / DFD600WR | 1000 | 1010 | 870 | 1100 | 35 |
| DFD1500HL / DFD1500WL | 1250 | 1260 | 1120 | 1350 | 45 |



Accessories

30478876 Ramp, DFD CS 600 kg, 1000 mm
 30571736 Ramp, DFD CS, 1250 mm
 30478885 Ramp, DFD SS, 600 kg, 1000 mm
 30571737 Ramp, DFD SS, 1250 mm

30550089
 30550090
 30550093
 30550094
 30531244
 30539553

Stop Bar DFD CS 1 m
 Stop Bar DFD CS 1.25 m
 Stop Bar DFD DFL SS 1 m
 Stop Bar DFD DFL SS 1.25 m
 Floor column kit, Painted
 Floor column kit, SST

Compliance

- **Metrology:** OIML R60 certified load cells
- **Compliance Marks:** CE, WEEE

80776562 © Copyright OHAUS Corporation

OHAUS Europe GmbH
 Heuwinkelstrasse 3,
 8606 Nänikon,
 Switzerland

e-mail: ssc@ohaus.com
 Tel: 0041 22 567 53 19
 e-mail: tsc@ohaus.com
 Tel: 0041 22 567 53 20

www.ohaus.com

The management system governing the manufacture of this product is ISO 9001:2015 certified.

