



Defender® 5000

Low Profile Floor Scales



Low Profile Floor Platform for Drive-thru Applications

Defender 5000 Series low profile platform combines durable construction and an ultra-low height. Featuring a painted steel or stainless steel platform, built-in ramp, four alloy steel or IP68 stainless steel load cells (with adjustable feet), the ultra-low design simplifies the job of moving goods on and off the platform.

Unique Features:

- **Defender Series Low Profile Platforms** – Ultra-low profile painted steel or stainless steel solution for weighing drums and carts by loading and driving over the platform. 35 mm height for the 600 kg models and 45 mm for the 1500 kg models.
- **Install Easily with EasyConnect™** – Platforms are equipped with a 5 m double-shielded EasyConnect™ cable, which allows instant configuration with Defender 5000 (TD52) indicators for quick installation.
- **4 Models and 2 Different Sizes and Capacities for Industrial Applications** – Platform is available in 4 different models with 1000 x 1000 mm and 1250 x 1250 mm sizes and capacities of 600 to 1500 kg, allowing greater flexibility to best suit your weighing needs.

Defender® 5000

Low Profile Floor Scales

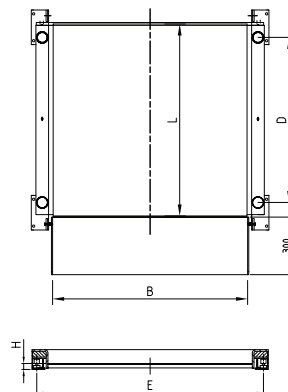
Platform Models	DFD600HR	DFD1500HL	DFD600WR	DFD1500WL
Platform Dimensions (mm)	1000 x 1000	1250 x 1250	1000 x 1000	1250 x 1250
Platform Height (mm)	35	45	35	45
Material	Mild steel, black painted, non-treaded surface		304 Stainless steel, bead blasted, non-treaded surface	
Top plate thickness (mm)	5	6	5	6
Platform Capacity (kg)	600	1500	600	1500
Maximum Central Load	150% of rated capacity			
Feet	4 x swivel design, alloy steel with rubber caps, adjustable height		4 x swivel design, stainless steel with rubber caps, adjustable height	
Load Cell Model	Zemic H8C, alloy steel, OIML approved		OHAUS SBH, stainless steel, OIML approved	
Load Cell Capacity Emax (kg)	500	1000	500	1000
Load Cell Safe Overload Limit	150% of Emax			
Load Cell Protection	IP65, silicon sealed		IP68, laser-weld hermetically sealed	
Load Cell Output Impedance	350 Ω ± 3 Ω		350 Ω ± 1 Ω	
Load Cell Cable Length	2 m		3 m	
Junction Box	IP54, 304 stainless steel, with double-shielded 5m long cable		IP67, 304 stainless steel, with double-shielded 5m long cable	
Operating Temperature	-10 °C to 40 °C			
Platform Net Weight (kg)	136	195	136	195
Platform Shipping Weight (kg)	166	235	166	235
Platform Shipping Dimensions(W x D x H)	1320 x 1120 x 250	1520 x 1320 x 255	1320 x 1120 x 250	1520 x 1320 x 255
Ramp	One ramp standard, the other ramp available as accessory			
Compatible OHAUS Indicator	TD52P/TD52XW (with EasyConnect™ feature) sold seperately			

DFD52P600HR DFD52P1500HL DFD52XW600WR DFD52XW1500WL

Indicators	TD52P, ABS plastic / TD52XW, 304 stainless steel IP68 housing			
Capacity × Readability (kg)	600 × 0.2	1500 × 0.5	600 × 0.2	1500 × 0.5
Display	Dot matrix LCD with white LED backlight, 256 × 80 pixels			
Interface	RS232 included, Optional USB, Ethernet			
Power	i-DT33P, 240VAC or C batteries / i-DT33XW, 240VAC or rechargeable batteries			
Weighing Units	kg, g, lb, oz, lb:oz, t, ton, custom			
Features	Weighing, Percent Weighing, Counting, Checkweighing, Dynamic Weighing			

Outline Dimensions

Low Profile					
Model	L (mm)	B (mm)	D (mm)	E (mm)	H (mm)
DFD600HR / DFD600WR	1000	1010	870	1100	35
DFD1500HL / DFD1500WL	1250	1260	1120	1350	45



Accessories

30478876	Ramp, DFD CS 600 kg, 1000 mm	30550089
30571736	Ramp, DFD CS, 1250 mm	30550090
30478885	Ramp, DFD SS, 600 kg, 1000 mm	30550093
30571737	Ramp, DFD SS, 1250 mm	30550094
		30531244
		30539553

Stop Bar DFD CS 1 m
 Stop Bar DFD CS 1.25 m
 Stop Bar DFD DFL SS 1 m
 Stop Bar DFD DFL SS 1.25 m
 Floor column kit, Painted
 Floor column kit, SST

Compliance

- Metrology: OIML R60 certified load cells
- Compliance Marks: CE, WEEE

OHAUS Europe GmbH
 Heuwinkelstrasse 3,
 8606 Nänikon,
 Switzerland

e-mail: ssc@ohaus.com
 Tel: 0041 22 567 53 19
 e-mail: tsc@ohaus.com
 Tel: 0041 22 567 53 20

www.ohaus.com

The management system governing the manufacture of this product is ISO 9001:2015 certified.

