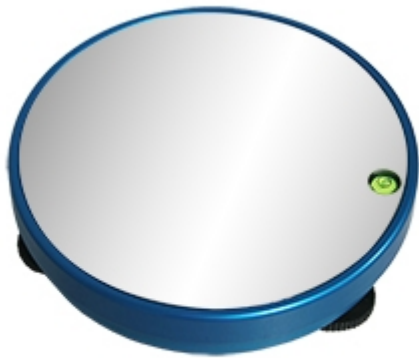


## RPLC

### RPLC SERIES SINGLE-CELL ROUND PLATFORMS



---

**Painted** Steel. Load cell in **Aluminium**. **IP65** protection rating.

---

Precision class **C3, C3MR**.

---

Small capacity electronic round platforms made in anodized blue aluminium. Precise and sturdy structure, suitable for scales and automatic weight checking systems in all industrial and commercial applications. Standard version is with approved load cell.

The best solution  
for advanced industrial  
applications

## MAIN FEATURES

- Functions with an approved aluminium “single point” load cell according to OIML R60 standards with protection against dust and water splashes according to IP65 standards (350 Ohm input resistance).
- Anodized blue aluminium structure with adjustable resting feet and level.
- Stainless steel plate.
- 15 Vdc power supply.
- Shielded 1,5 m connection cable with connectors for connection to the indicator.

## OPTIONS ONLY AVAILABLE AT TIME OF ORDER

- Connection to the indicator and calibration with CE-M 3000e approval.
- High resolution models for internal factory use.

## OPTIONS FOR ATEX VERSION

- CCATEX: ATEX certificate for each load cell.
- DCATEXMECH: ATEX declaration for the PLATFORM (for the load cells ATEX declaration see CCATEX-1 code). Option to be offered only if the platform is ordered without the indicator, if so, refer to the chosen weight indicator available certifications.

## VERSIONS

### Available versions

Codice	l x w x h (mm)	Max (kg)	d (g)	<b>M</b> (g)*	<b>M</b> 2R (g)*	d HR (g)*
RPLC1	Ø=178, h=45	1,5	0,2	0,5	0,2 / 0,5	0,05
RPLC3	Ø=178, h=45	3	0,5	1	0,5 / 1	0,1
RPLC6	Ø=178, h=45	6	1	2	1 / 2	0,2
RPLC15	Ø=178, h=45	15	2	5	2 / 5	0,5

(\*) Divisions obtainable only with the relative options, in combination with Dini Argeo weight indicator.



“YOUR WORLDWIDE PARTNER FOR WEIGHING”

**DINI ARGEO  
FRANCE sarl**  
France

**DINI ARGEO  
GMBH**  
Germany

**DINI ARGEO  
UK Ltd**  
United Kingdom

**DINI ARGEO WEIGHING  
INSTRUMENTS Ltd**  
China

**DINI ARGEO  
OCEANIA**  
Australia



**COMPANY HEADQUARTERS**

Via Della Fisica, 20  
41042 Spezzano di Fiorano Modena • Italy  
Tel. +39.0536 843418

**SERVICE ASSISTANCE**

Via Dell'Elettronica, 15  
41042 Spezzano di Fiorano Modena • Italy  
Tel. +39.0536 921784



*SALES AND TECHNICAL ASSISTANCE SERVICE*